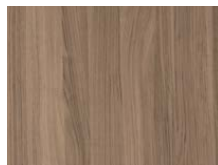
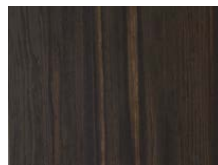


ME Materia

---

**Pergamena**

Noce Italia

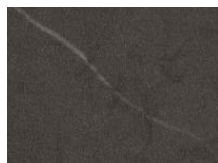


Rovere Cotto

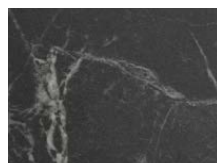
---

**Laminati  
Laminates**

Mailand

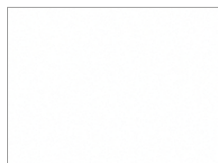


Tobacco



Impero

---

**Fenix**

Bianco Kos

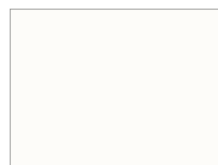


Grigio

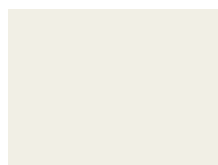


Grigio Bromo

**Laccati Lucidi e Opachi**  
**Matt and Gloss Lacquers**



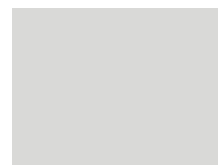
Artico



Magnolia



Grigio Corda



Efeso Fx  
*(solo opaco/only matt)*



Ardesia



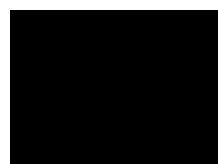
Ferro



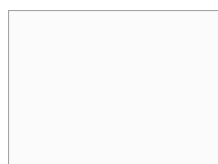
Grigio Fx  
*(solo opaco/only matt)*



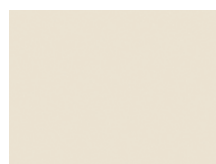
Antracite



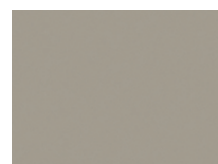
Nero



Bianco 10



Canapa



Juta



Steppa



Visone



Creta



Terranova



Gris  
*(solo opaco/only matt)*



Brown



Salvia



Timo



Muschio



Aftereight



Ghiaccio



Pervinca



Avio



Senape



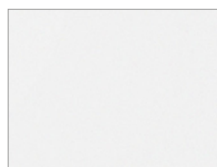
Cuoio



Colori RAL/NCS/  
a campione  
RAL/NCS/  
custom colours

ME Materia

---

**Glaks**

Bianco



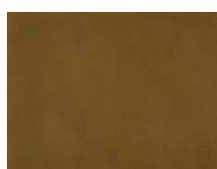
Visone

Grigio Reale

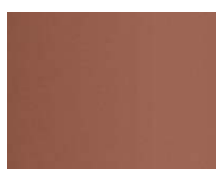
---

**Laccati Metallici  
Metallic Lacquers**

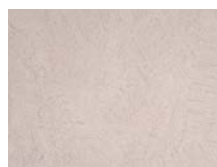
Ottone



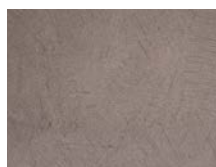
Bronzeo

Rame

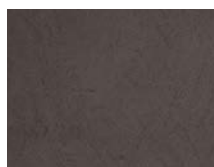
---

**Terre**

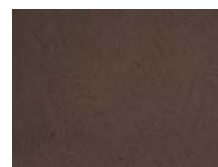
Bianco Perlescente



Nero Roma



Nero Vite Germania

Terra Bruciata

---

**Essenza Olmo  
Olmo wood**

Naturale



Gesso



Tabacco



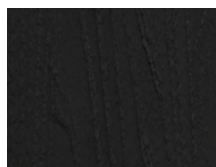
Cenere



Fumo



Grigio



Lava

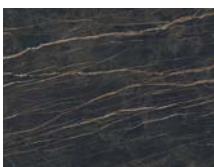
ME Materia

**Laminam  
collezione Lapis  
Laminam  
Lapis collection**Pietra di Savoia Grigia  
Bocciardata

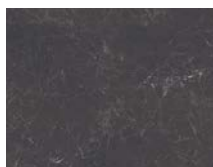
Ossido Nero



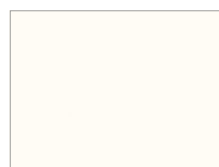
Ossido Bruno

**Laminam  
Collezione Decor  
Laminam  
Decor collection**Bianco Altissimo  
Venato Soft Touch

Noir Desir Opaco



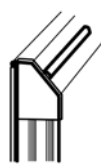
Nero Greco Opaco

**Corian**

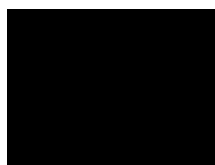
Glacier White

**Finiture e colori disponibili telaio / Frame finishes and colors available**

TELAIO BIANCO



SILICONE BIANCO



TELAIO NERO



SILICONE NERO

**Finiture e colori disponibili profili / Available finishes and colours of profiles**

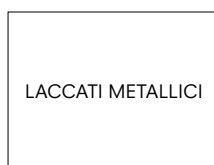
LACCATI OPACHI



LACCATI LUCIDI



LACCATI CALCE



LACCATI METALLICI